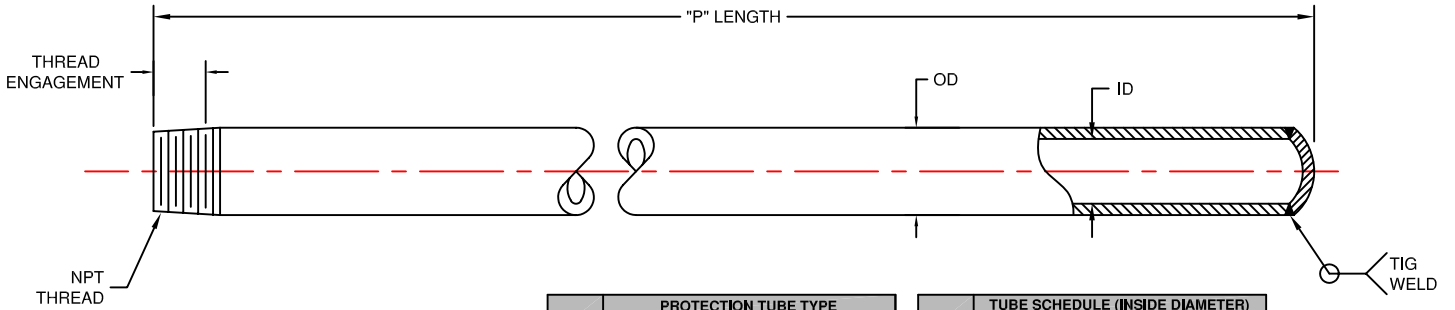


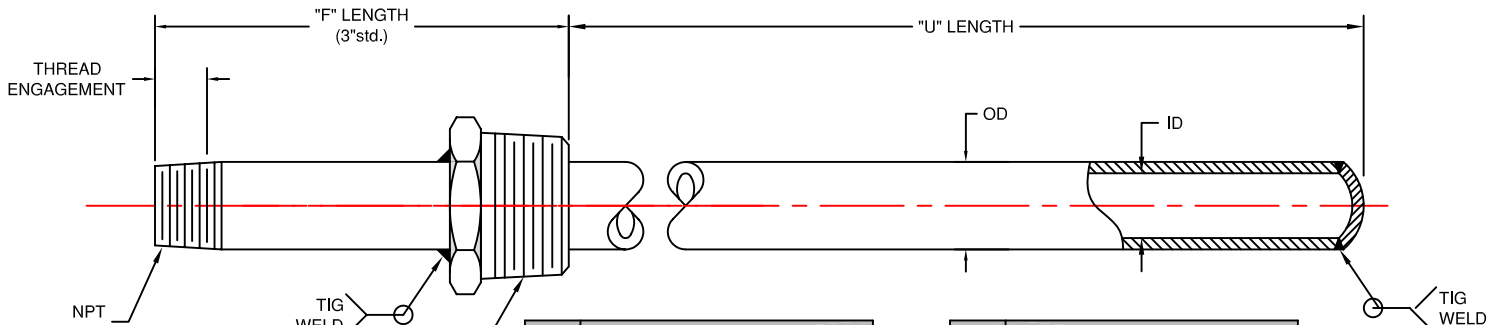
PROTECTION TUBES



CODE	PROTECTION TUBE TYPE		TUBE SCHEDULE (INSIDE DIAMETER)			
	TUBE SIZE	OD	1/4"NPT	1/2"NPT	3/4"NPT	1"NPT
51	1/4" NPS	0.540	0.364	0.622	0.824	1.049
52	1/2" NPS	0.840	0.302	0.546	0.742	0.957
53	3/4" NPS	1.050	N/A	0.464	0.612	0.815
54	1" NPS	1.315	N/A	N/A	0.434	0.599

53-40-Q-36

CODE	WELL MATERIAL	CODE	"P" LENGTH
P	304 STAINLESS STEEL		IN INCHES
Q	310 STAINLESS STEEL		
R	316 STAINLESS STEEL		
PLorRL	304or316 S. S. (LOW CARBON)		
N	CARBON STEEL		
J	INCONEL 600		
H	HASTELLOY C276		



CODE	PROTECTION TUBE TYPE			WELL MATERIAL	
	TUBE SIZE	PROCESS NPT	OD	CODE	"U" LENGTH
601	1/2" NPT	1/2" NPT		P	304 STAINLESS STEEL
602	1/4" NPS	3/4" NPT	0.540	Q	310 STAINLESS STEEL
603		1" NPT		R	316 STAINLESS STEEL
606		3/4" NPT		PLorRL	304or316 S. S. (LOW CARBON)
607	1/2" NPS	1" NPT	0.840	N	CARBON STEEL
608		1 1/4" NPT		J	INCONEL 600
610		1" NPT		H	HASTELLOY C276
611	3/4" NPS	1 1/4" NPT	1.050		
612		1 1/2" NPT			
613		1 1/4" NPT			
614	1" NPT	1 1/2" NPT	1.315		

611-80-R-3-48(N)

USE ONLY IF BUSHING MATERIAL IS NOT THE SAME AS TUBE MATERIAL

CODE	TUBE SCHEDULE (INSIDE DIAMETER)				CODE	"U" LENGTH
	1/4"NPT	1/2"NPT	3/4"NPT	1"NPT		IN INCHES
40	0.364	0.622	0.824	1.049		
80	0.302	0.546	0.742	0.957		
160	N/A	0.464	0.612	0.815		
XXS	N/A	N/A	0.434	0.599		

CODE	CAP & CHAIN
-BCC	BRASS
-SSCC	STN. STL.

CAP & CHAIN

Prevent foreign matter from entering protection tubes when not in use. Caps are available in Brass or Stainless Steel. A captive chain is attached to prevent loss.

To order as a test well specify cap & chain code letters after protection tube ordering code.



TEMPERATURE MEASUREMENT DESIGNER'S GUIDE
WWW.THERMO-ELECTRIC-DIRECT.COM

SECTION TWPT PROTECTION TUBES PLAIN & THREADED CONNECTION

The information contained hereon shall be considered the sole property of Thermo Electric Company, Inc. The recipient thereof agrees not to disclose or reproduce said information to parties outside the recipient's organization without the written permission of Thermo Electric.

Doc. No.: TE-CO010109-TWPT-100