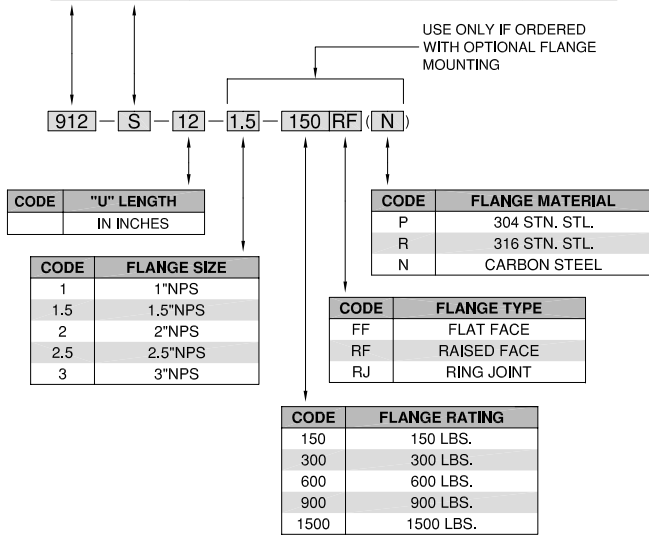
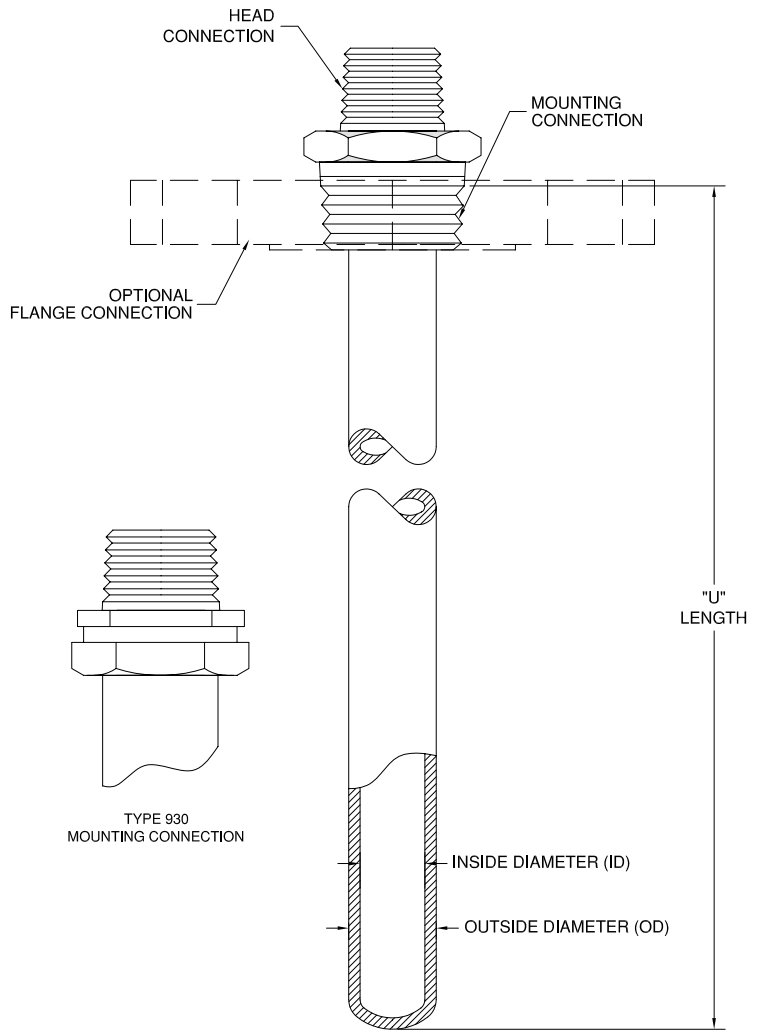


PROTECTION TUBES

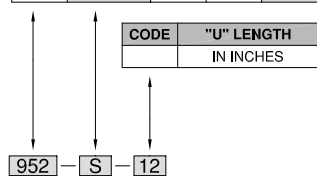
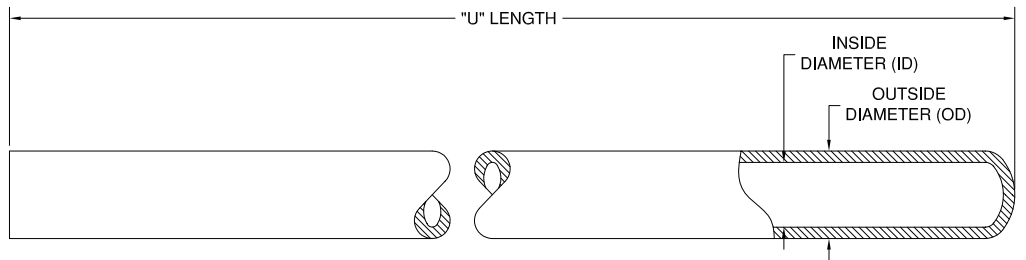
PROTECTION TUBES WITH THREADED OR FLANGED PROCESS CONNECTIONS

PROTECTION TUBE TYPE & MATERIAL						
CODE	CODE	MOUNTING CONNECTION	HEAD CONNECTION	TUBE SIZE		MATERIAL
				I.D.	O.D.	
900	U	1/2"NPT	1/2"NPT	1/4"	3/8"	MULLITE
901		3/4"NPT	1/2"NPT	3/8"	1/2"	
902		1"NPT	3/4"NPT	7/16"	11/16"	
903		1 1/4"NPT	3/4"NPT	5/8"	7/8"	
904		1 1/4"NPT	3/4"NPT	3/4"	1"	
910	S	1/2"NPT	1/2"NPT	5/32"	1/4"	99.5% PURE ALUMINA
911		1/2"NPT	1/2"NPT	3/16"	5/16"	
912		1/2"NPT	1/2"NPT	1/4"	3/8"	
913		3/4"NPT	1/2"NPT	5/16"	1/2"	
914		3/4"NPT	1/2"NPT	7/16"	9/16"	
915		3/4"NPT	1/2"NPT	7/16"	9/16"	
916		1 1/4"NPT	3/4"NPT	5/8"	7/8"	
917	1 1/4"NPT	3/4"NPT	3/4"	1"		
930	CERMET	NONE	1/2"NPT	5/8"	7/8"	CERMET
930T		3/4"NPT	1/2"NPT	5/8"	7/8"	



PLAIN END PROTECTION TUBES

PROTECTION TUBE TYPE & MATERIAL				
CODE	CODE	TUBE SIZE		MATERIAL
		I.D.	O.D.	
950	U	1/4"	3/8"	MULLITE
951		3/8"	1/2"	
952		7/16"	11/16"	
953		5/8"	7/8"	
954		3/4"	1"	
960	S	5/32"	1/4"	99.5% PURE ALUMINA
961		3/16"	5/16"	
962		1/4"	3/8"	
963		5/16"	1/2"	
964		7/16"	9/16"	
965		7/16"	9/16"	
966		5/8"	7/8"	
967	3/4"	1"		



Mullite Vitreous refractory mullite (silica - alumina) protection tubes can be used to 3000°F. They are impervious to air to 3000°F, to dry hydrogen and carbon monoxide to 2550°F, and will maintain 10 - 5 millimeters of mercury to 2600°F. Low rate of thermal expansion imparts good thermal shock resistance.

High Purity Alumina Sintered alumina oxide (over 99.5% Alumina Oxide) tubes have a maximum working temperature of 3450°F. The high thermal conductivity of 99.5% alumina oxide guarantees quick temperature response. It is highly resistant to reducing, oxidizing, and high vacuum atmospheres, corrosive alkaline vapors and aluminum chloride vapors. Stable to acids, alkalis, metal melts, most glass fluxes, salt melts and slags. Dense structure prevents penetration of melts providing longer life in environments which normally react within 96% alumina temperatures..

Cermet Cermet metal - ceramic is a combination of chromium and aluminum oxide stable in oxidizing atmospheres to 2500°F. Cermet tubes are stronger and more resistant to repeated thermal and mechanical shock than ceramic materials, but are relatively brittle as compared to metals. Abrasive conditions at temperatures to 2300°F have little effect on cermet tubes, and chemicals such as sulphur dioxide, sulphur trioxide and concentrated sulphuric acid have a low rate of attack on the material.

Silicon Carbide Thermo Electric also offer several grades of silicon carbide protection tubes which can be used in temperatures up to 3000°F where an extremely hard and chemically inert material is required. It resists most acids, molten salts and acid slags making it ideal for use with molten metals such as aluminum, copper, brass, cadmium, lead and zinc.

