



## Model 3300 End-of-Line Vacuum Relief Vent

### OBJECTIVE

The Model 3300 vacuum relief vent is intended for use on storage tanks, vapor recovery systems and process systems where vacuum relief is required. Ruggedly built to provide dependable service and superior seat tightness.

### TECHNIQUE

Weight loaded pallet on the vacuum side of the vent allows the intake of air necessary to maintain the tank pressure within the permissible vacuum limit to avoid damage to the tank. The model 3300 virtually eliminates the intake of air except during normal tank inbreathing.

### CONSTRUCTION

**Housing Material:** Available in Aluminum, Carbon Steel, 316 SST or Corrosion Resistant Fiberglass.

**Trim Material:** 316 SST - Standard on all metal vents. Fiberglass - Standard on all FRP vents except for the cover studs which are either 316 SST or Hastelloy and do not see process vapors.

**Pallet Diaphragm Material:** FEP Teflon - Standard. Other materials available on request.

### SPECIAL FEATURES

**Modular:** The Model 3300 vacuum vent is part of Valve Concepts, Inc. modular vent product line. The vacuum vent can easily be converted to a pressure / vacuum vent, venting to atmosphere or with a pipeaway, which can either be weight loaded, spring loaded or pilot operated depending on the application requirements.

**Maintains Accurate Vacuum Settings.** The pallet assembly is fabricated to the precise weight necessary to maintain an accurate vacuum setting. The minimum setting available is ½ oz/in<sup>2</sup> and the maximum vacuum setting is 1 psig on all sizes. If a higher set point is needed see Valve Concepts Series 4300 Spring Loaded Vacuum Vent. As with every vent supplied by Valve Concepts, Inc. a Certified Test Certificate is included verifying the accuracy of both set point and leakage rate. As with all direct acting vents supplied by Valve Concepts the leakage is less than 1 SCFH at 90% of set point. The standard unit is suitable for intermittent back pressures of 2 psig. Higher back pressure ratings are available on request.

**Condensate Drainage.** Self-draining housing body and pallet drip ring keep condensate away from the seating surface, preventing freezing, binding and clogging.

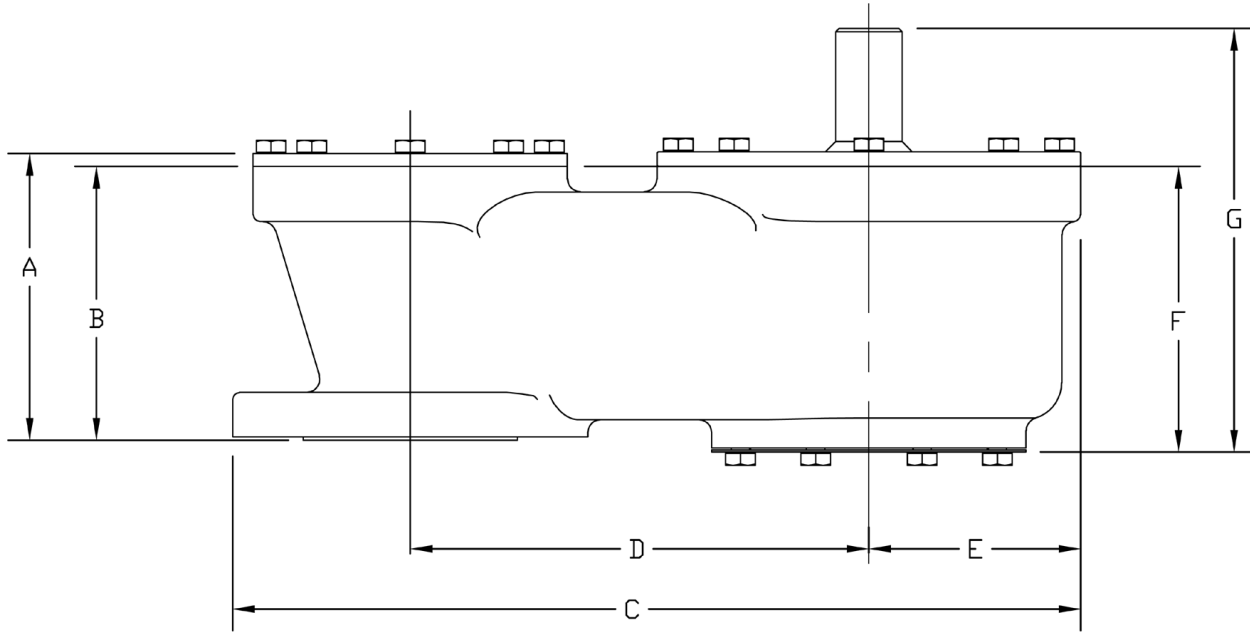
**Air-Cushioned Seating.** Air-cushion seating provides tight sealing to reduce the unnecessary intake of air. The pallet has outer guiding and a center stabilizing stem to insure proper alignment.

**Numerous Sizes Available.** All CS and SST vents sizes 2-inch thru 12-inch mate with standard ANSI flange connections. All Aluminum and FRP vents mate with 125# flat face flange.

TABLE 1

MATERIALS OF CONSTRUCTION			
Series	Housing	Pallets *	Seats
3300CS	CS	316 SST	Teflon®
3300SST	316 SST	316 SST	Teflon®
3300D	Derakane® 470	Derakane® 470	Teflon®
3300E	Derakane® 411	Derakane® 411	Teflon®
3300F	Furan	Furan	Teflon®
3300ALUM	Aluminum	316 SST	Teflon®

# SPECIFICATIONS



DIMENSIONS – Standard Construction for Carbon Steel & Stainless Steel Housing & Pallets							
SIZE	A	B	C	D	E	F	G
2"	4.84"	4.62"	14.34"	7.75"	R 3.58"	4.82"	7.15"
3"	5.94"	5.72"	16.06"	8.31"	R 4.00"	5.76"	8.39"
4"	6.88"	6.65"	20.88"	11.00"	R 5.38"	6.65"	10.05"
6"	7.46"	7.23"	25.50"	12.81"	R 7.19"	7.10"	11.42"
8"	8.68"	8.45"	29.50"	15.25"	R 7.50"	8.20"	13.22"
10"	9.62"	9.40"	35.25"	18.25"	R 9.00"	8.84"	14.60"
12"	10.06"	9.84"	38.31"	19.50"	R 9.31"	9.28"	15.50"
DIMENSIONS – Standard Construction for Corrosion Resistant Fiberglass Housing & Pallets							
2"	N/A	8.87"	22.37"	11.00"	5.31"	5.37"	8.76"
3"	N/A	8.87"	22.37"	11.00"	5.31"	5.37"	8.76"
4"	N/A	10.25"	30.37"	15.03"	7.12"	6.75"	10.90"
6"	N/A	10.25"	30.65"	15.03"	7.12"	6.75"	11.56"
8"	N/A	12.72"	41.91"	20.75"	9.50"	8.22"	13.88"
10"	N/A	12.72"	42.13"	20.75"	9.50"	8.22"	14.56"
12"	N/A	13.41"	46.44"	23.00"	10.00"	8.64"	15.45"

## 3300 Series PRODUCT CODE

04/24/06



TABLE 1 SIZE	
Size	CODE
2"	2
3"	3
4"	4
6"	6
8"	8
10"	A
12"	B

TABLE 2 - BODY/STUDS & NUTS MATERIALS		
Material	W/O Flamescreen	W/ Flamescreen
	CODE	CODE
CS/SST	C	D
SST/SST	S	T
Derakane 470/SST	F	
Derakane 470/Hastelloy	H	
Derakane 411/SST	K	
Derakane 411/Hastelloy	L	
Furan/SST	G	
Furan/Hastelloy	J	
ALUM./SST	A	B

Valve Concepts, Inc.  
 A Cashco Company  
 607 W. 15th Street  
 Ellsworth, KS 67439  
 PH (785) 472-4461  
 Fax. # (785) 472-3539  
 www.valveconcepts.com  
 email: vcisales@cashco.com  
 Printed in U.S.A. Model 3300 TB